



MATERIALS

Bernat® Baby Blanket Dappled™ (10.5 oz/300 g; 220 yds/201 m)
Wandering Blue (15005) **3 balls or 545 yds/498 m**

Size U.S. K/10.5 (6.5 mm) crochet hook **or size needed to obtain gauge.**

 CROCHET | SKILL LEVEL: **INTERMEDIATE**

ABBREVIATIONS

Approx = Approximately

Beg = Beginning

Ch = Chain(s)

Cont = Continue

Dc = Double crochet

Rnd(s) = Round(s)

Sc = Single crochet

Sl st = Slip stitch

Sp(s) = Space(s)

St(s) = Stitch(es)

MEASUREMENTS

Approx 36" x 40" [91.5 x 101.5 cm].

GAUGE

8 sc and 9 rows = 4" [10 cm].

INSTRUCTIONS

Note: Ch 3 at beg of rnd counts as dc.

Ch 13. See diagram on page 2.

1st rnd: 2 dc in 4th ch from hook. (Ch 1. Skip next 2 ch. 3 dc in next ch) twice. Ch 1. Skip next 2 ch. (3 dc. Ch 2. 3 dc. Ch 2. 3 dc) all in next ch. Working along other side of ch, (Ch1. Skip next 2 ch. 3 dc in next ch) twice. Ch 1. Skip next 2 dc. (3 dc. Ch 2. 3 dc. Ch 2) all in next ch. Join with sl st to top of ch 3.

2nd rnd: Sl st in each of next 2 sts and next ch-1 sp. Ch 3. 2 dc in same sp. Ch 1. (3 dc in next ch-1 sp. Ch 1) twice. (3 dc. Ch 2. 3 dc) all in next ch-2 sp. Ch 1. (3 dc. Ch 2. 3 dc) all in next ch-2 sp. Ch 1. (3 dc in next ch-1 sp. Ch 1) 3 times. (3 dc. Ch 2. 3 dc) all in next ch-2 sp. Ch 1. (3 dc. Ch 2. 3 dc) all in next ch-2 sp. Ch 1. Join with sl st to top of ch 3.

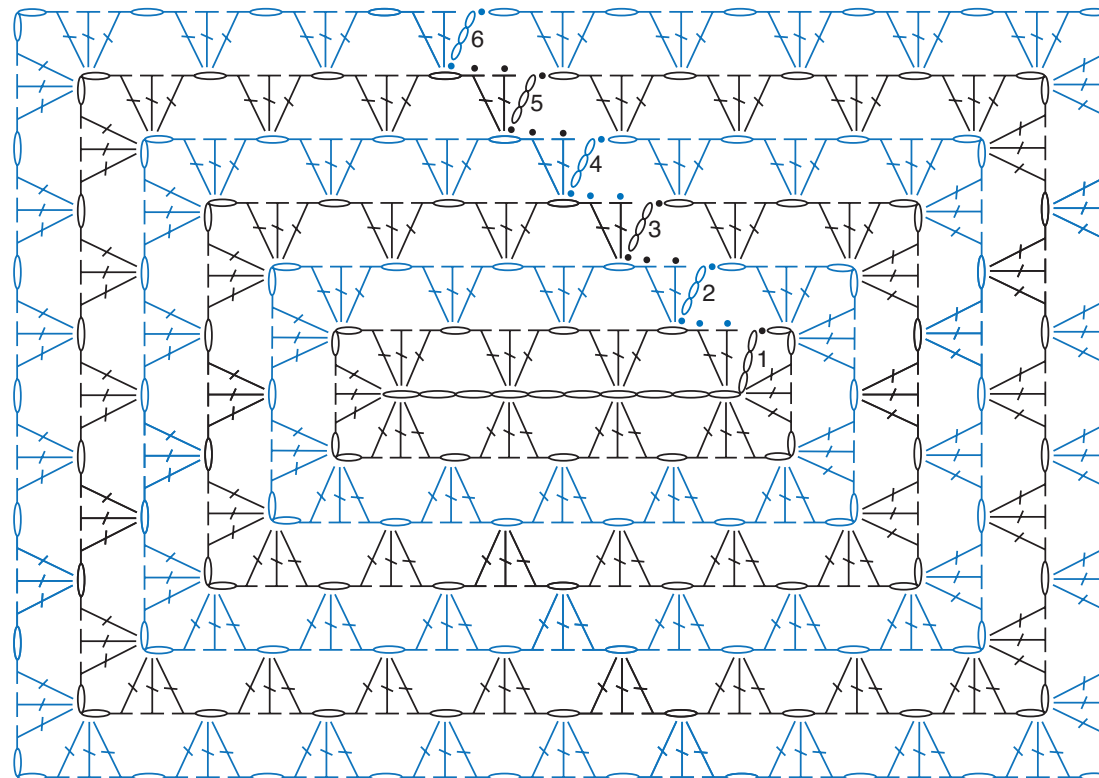
3rd rnd: Sl st in next 2 sts and next ch-1 sp. Ch 3. 2 dc in same sp. Ch 1. (3 dc in next ch-1 sp. Ch 1) twice. (3 dc. Ch 2. 3 dc) all in next ch-2 sp. Ch 1. 3 dc in next ch-1 sp. Ch 1. (3 dc. Ch 2. 3 dc) in next ch-2 sp. Ch 1. (3 dc in next ch-1 sp. Ch 1) 4 times. (3 dc. Ch 2. 3 dc) all in next ch-2 sp. Ch 1. 3 dc in next ch-1 sp. Ch 1. (3 dc. Ch 2. 3 dc) all in next ch-2 sp. Ch 1. 3 dc in next

ch-1 sp. Ch 1. Join with sl st to top of ch 3.

4th rnd: Sl st in next 2 sts and next ch-1 sp. Ch 3. 2 dc in same sp. Ch 1. (3 dc in next ch-1 sp. Ch 1) twice. (3 dc. Ch 2. 3 dc) all in next ch-2 sp. (Ch 1. 3 dc in next ch-1 sp) twice. Ch 1. (3 dc. Ch 2. 3 dc) all in next ch-2 sp. Ch 1. (3 dc in next ch-1 sp. Ch 1) 5 times. (3 dc. Ch 2. 3 dc) all in next ch-2 sp. (Ch 1. 3 dc in next ch-1 sp) twice. Ch 1. (3 dc. Ch 2. 3 dc) all in next ch-2 sp. (Ch 1. 3 dc in next ch-1 sp) twice. Ch 1. Join with sl st to top of ch 3.

5th rnd: Sl st in next 2 sts and next ch-1 sp. Ch 3. 2 dc in same sp. Ch 1. (3 dc in next ch-1 sp. Ch 1) twice. (3 dc. Ch 2. 3 dc) all in next ch-2 sp. (Ch 1. 3 dc in next ch-1 sp) 3 times. Ch 1. (3 dc. Ch 2. 3 dc) all in next ch-2 sp. Ch 1. (3 dc in next ch-1 sp. Ch 1) 6 times. (3 dc. Ch 2. 3 dc) all in next ch-2 sp. (Ch 1. 3 dc in next ch-1 sp) 3 times. Ch 1. (3 dc. Ch 2. 3 dc) all in next ch-2 sp. (Ch 1. 3 dc in next ch-1 sp) 3 times. Ch 1. Join with sl st to top of ch 3.

Cont as established, working (Ch 1. 3 dc) in each ch-1 sp and (3 dc. Ch 2. 3 dc) in each ch-2 sp, having 1 more dc group along each edge of Blanket each rnd, until work measures approx 36" [91.5 cm] wide. Fasten off.



RNDS 1-6

STITCH KEY

- = chain (ch)
- = slip stitch (sl st)
- ┆ = double crochet (dc)