

Rising Star Quilt Block

Star Quilt Block of the Month Block #12 Rising Star

NOTE: Lighter shade of color indicates wrong side of fabric.

Diagram 1

Use Eight 2" Fabric E squares and Four 2" x 3 1/2" Fabric A rectangles from Center Star Bag.

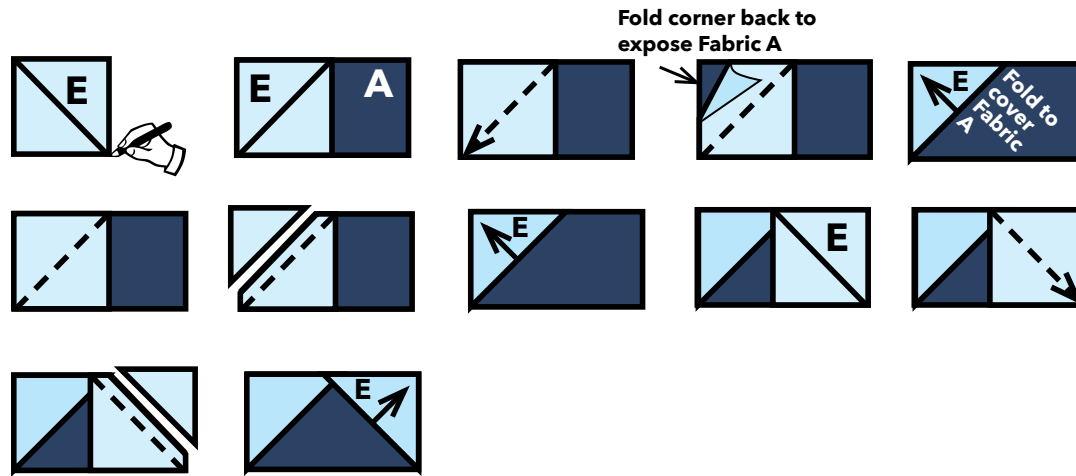


Diagram 2

Use 3 1/2" Fabric E square and Four 2" Fabric A squares from Center Star Bag.

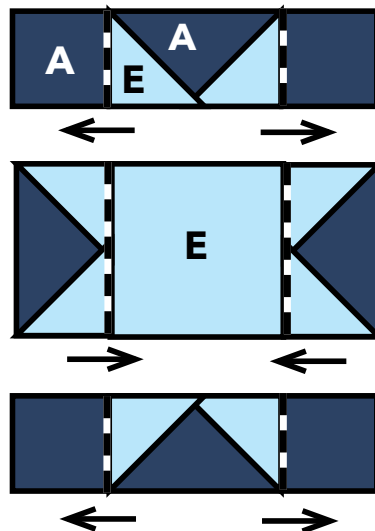
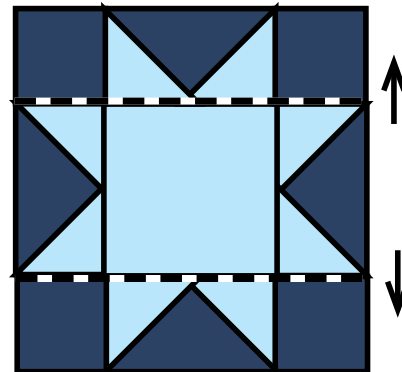


Diagram 3



Rising Star Quilt Block

Diagram 4

Use 7 1/4" Fabric A square and Four 3 7/8" Fabric E squares from Flying Geese Bag.

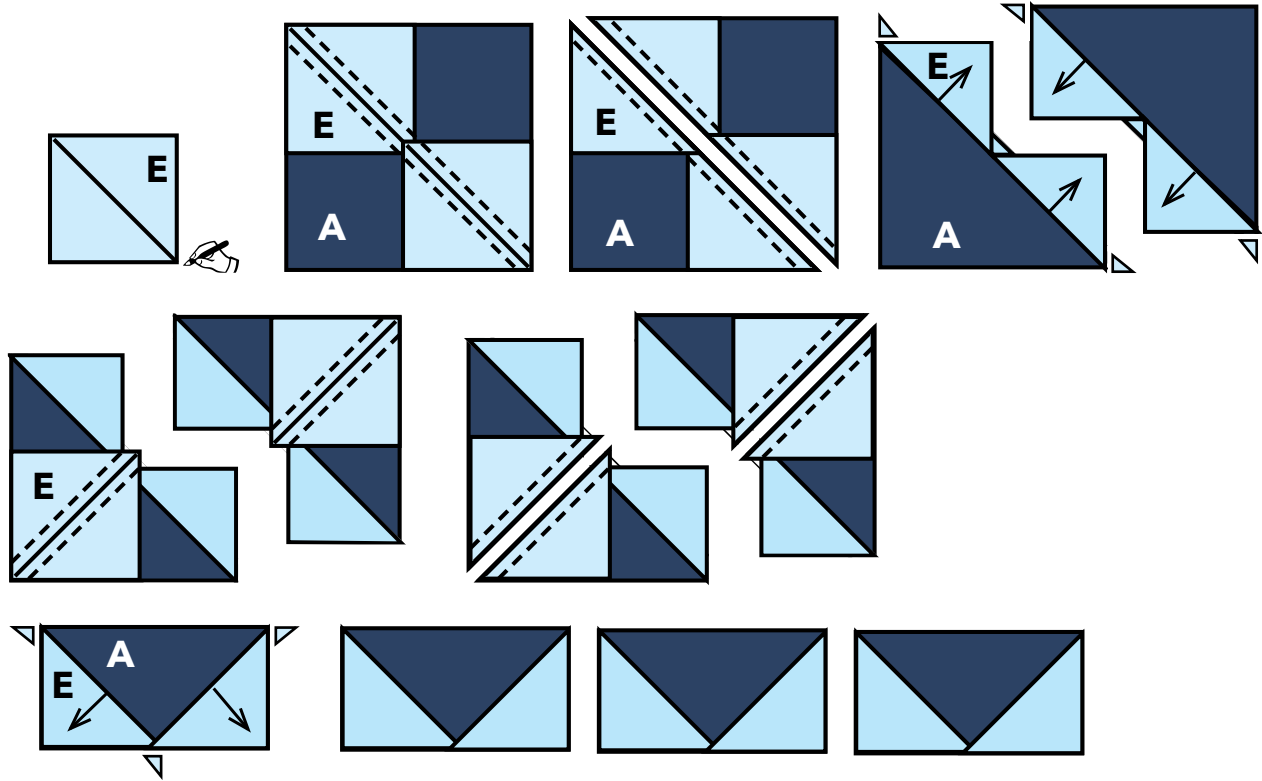


Diagram 5

Use 3 1/2" Fabric A squares from Finishing Bag.

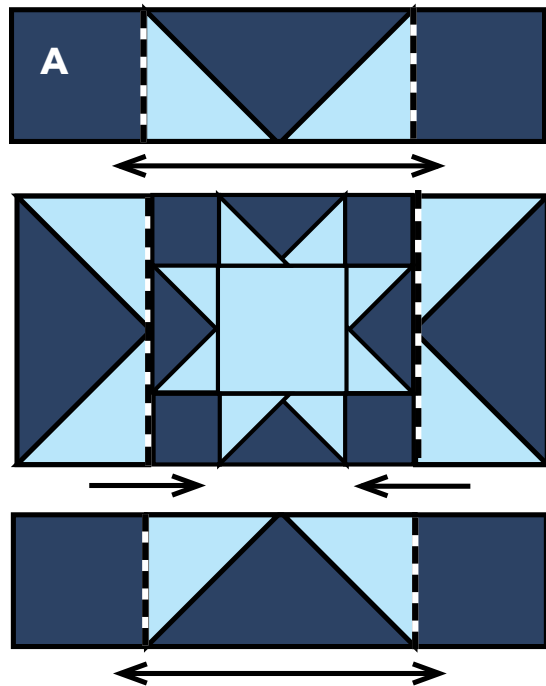


Diagram 6

