

**2** skill level

free



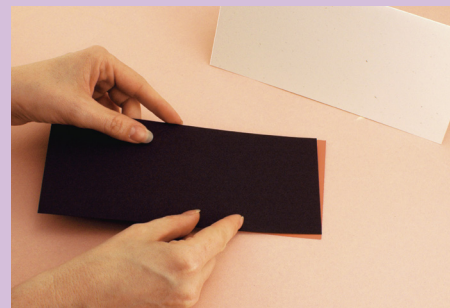
Provo Craft® Machines & Accessories

just ask *Jo-Ann* how to

reorder: tech & tools #2

more projects, tips & techniques at Joann.com™

## Layering using a Cricut® machine



**Step 1:** Cut an 8"x8½" piece from gray cardstock; fold it in half length-wise to create a card. Cut a 3½"x8½" piece of black cardstock. Cut a 3¾"x8½" piece of pink cardstock. Adhere the black cardstock to the pink cardstock and place this on top of the gray card.



**Step 2:** Using printed paper and Opposites Attract® Cricut cartridge, set your dial size to 3"; press the **Opposite** feature and **Shift Lock** and type *BLESSYOU*.



finished project

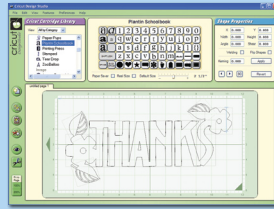
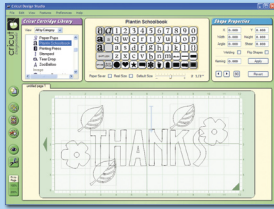


**Step 3:** Press the **Reset All** key located on the right side of your overlay. Set your dial size to 1" and cut the *thanks* phrase from pink cardstock. Using the same dial size, cut *thanks* again using the **Shadow** feature and gray cardstock. Adhere the pink phrase on top of the gray phrase.



**Step 4:** Assemble card: Adhere *BLESSYOU* to the black cardstock, staggering the letters. Glue layered *thanks* on top of these letters, making the word end at the right-hand edge of the card (it will be off-center). Insert into a legal size envelope and bless someone!

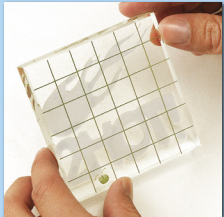
## Welding with Cricut DesignStudio®



You can use welding to combine any image with any other, in any position or combination, and the resulting image combination can be welded yet again. Combine your favorite flower images to make the ultimate bouquet.

## Stamping

1. Cut using Cricut machine and Deep Cut blade (blade depth: 4.5, speed: 3, pressure: 4). Ensure cut is no larger than acrylic block. For best results use fresh mat.
2. Arrange image(s) on block. Image should appear correct when viewed through top of block (see below).
3. Apply ink to stamp. Using even pressure, stamp on desired surface.



### Cricut Expression® Personal Electronic Cutter

The Cricut Expression is largest of the Cricut machines, and uses cutting mats measuring 12"x12" and 12"x24" to allow cuts from 1/4" up to an impressive 23½". Six modes and four functions offer greater customization of cuts, and new settings and menus add functionality to the machine. Machine set includes Plantin SchoolBook™ font cartridge, Accent Essentials® mini cartridge, 12"x12" cutting mat, cutting blade assembly, and necessary cords and manuals.

## Cricut Color™ Inks



Easy to use! Just replace your cutting blade with these quick, clean inks and draw every shape and letter that your cartridges can cut! Inks are archival quality, acid free, light fast, and waterproof.



## Products from Provo Craft®



### Gypsy™ Handheld Design Studio for Cricut

Life shouldn't slow down when you get inspired with a good design. Now it doesn't have to with Gypsy™, the handheld design studio for Cricut.

Whether you're on the road or just in the back yard, you can escape, be creative, and have fun. Gypsy™ stores all your Cricut cartridges, making it easy to search and find just the right shape.

Gypsy™ works easily with any Cricut machine—just connect and cut! Design anywhere with Gypsy from Provo Craft.

# Gypsy™ Handheld Design Center

Project courtesy of  
Jo-Ann Fabric and Craft Stores®

Crafts.  
Discover life's  
little pleasures.



**Step 1:**  
Link your Cricut cartridges.



**Step 2:**  
Design with cartridge artwork.



**Step 3:**  
Connect to any Cricut machine and cut!



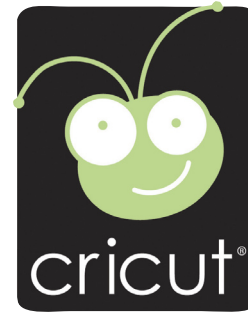
## Cricut® DesignStudio® Software

Explore the content of the Cricut® cartridges, searching by keyword and previewing new cartridges. Then using an on-screen cutting mat, determine each character's size, style, and placement. Combine cuts from different cartridges and quickly weld, shear, flip, kern, and duplicate characters. Save your designs to use later or to share with a friend!



## Deep Cut Blades

Cut on thicker materials, including chipboard. The deep blade has five additional blade depths (11 total). It has an extended life—stays sharper longer. For use with Blue Deep Blade Housing. Use in all Cricut® machines.



provo**craft**

For more product information and additional projects, visit:

[Joann.com®](http://Joann.com®)

[provocraft.com](http://provocraft.com)

[cricut.com](http://cricut.com)

[provocraft.com/gypsy](http://provocraft.com/gypsy)

Please read and follow all manufacturers' instructions for all tools and materials used. Provide adult supervision if children participate doing these projects. ©2010 Jo-Ann Stores, Inc. All rights reserved.

**JO-ANN**  
fabric and craft stores®  
P040-023 • 301-265